



Dear Parents and Students,

Whilst term 1 is over and students have a chance to 'recharge their batteries' it is important for all students to spend some time thinking about their pathways and future directions. There are many open days, experiences and 'days out' for students to attend in the next two terms so I encourage all students to take advantage of these. Happy reading and happy holidays!

### Career News Edition 4 Friday 27th March 2015

#### Reminders

- **UMAT** Registrations by 5 June; Test Date: 29 July, 2015
- **To find out about La Trobe Uni** attend [Experience La Trobe](#). Workshops, lectures and seminars. **See: Melbourne Campus, Thursday 9 April** and [Bendigo Campus, Friday 10 April](#).
- **Find out about the University of Melbourne and Southbank campus (VCA)**. For Year 10-12's. **Fri 10 April; Info:** 13 63 52; **Register:** [www.futurestudents.unimelb.edu.au/a-day-at-melbourne](http://www.futurestudents.unimelb.edu.au/a-day-at-melbourne).
- **Keeper for a day** - for aspiring zookeepers, at Healesville Sanctuary and Werribee Zoo. **Who:** Years 7-12; **When: Healesville:** Mar 31<sup>st</sup>, April 1<sup>st</sup>, 7<sup>th</sup>, 8<sup>th</sup>. **Werribee:** Mar 31<sup>st</sup>, 2<sup>nd</sup>, 8<sup>th</sup>, 10<sup>th</sup>.
- **Vet for a day** at Healesville Sanctuary. **Who:** Years 7-12; **When:** April 1<sup>st</sup>, 2<sup>nd</sup>, 8<sup>th</sup>, 9<sup>th</sup>. **Info:** <http://www.zoo.org.au/education/careers-programs>; **Bookings Essential:** 1300 966 784.

1. **'AT MONASH' SEMINAR SERIES** – Attendance is a **MUST** if you want the latest information about courses at Monash (all 6.30 to 8.00pm). **This series continues** in term 2 with: **design and fine art** Tues 21 April, **architecture** Tues 28 April, **interior architecture** Wed 29 April, **psychology** Thurs 30 April, **medicine and biomedical science** Tues 5 Amy, **law** Wed 13 May and **teaching** 14 Amy (more dates to follow next edition). **Registration (essential):** [www.destination.monash.edu/at-monash](http://www.destination.monash.edu/at-monash)  
I am meeting with a Monash representative early in term 2 on Friday 17<sup>th</sup> April so I hope to bring you more information about Monash courses.



2. **WHAT ABOUT AN ACCOUNTING CADETSHIP?** The Chartered Accountants Cadetship Program enables Year 12 and first year university students to **gain practical and commercial experience whilst completing university studies**. Advantages of having a cadetship: **earn a salary** while you study; **gain experience** in the real business world; **make your CV stand out** from others; open up a world of



**business opportunities;** take the first step to becoming a **chartered accountant** – a designation recognised in **leading financial centres around the world**. To become a cadet you must be accepted to do an Institute of Chartered Accountants in Australia approved degree at an Australian university. To find out more about employers offering cadetships, have a look at the Chartered Accountants [Employment Guide](#).

3. **RMIT NEWS** – [RMIT is visiting Williamstown High!](#) Many of our Year 12 graduates go on to study at RMIT. Students are welcome to come along and hear about all the exciting courses you can study after you graduate from WHS.  
**When: Tuesday 28<sup>th</sup> April 2015**  
**Time: Lunchtime 12.45-1.15pm**  
**Where: Pasco Campus Library.**

RMIT is a large institution, offering both **higher education and VET** courses (degrees, diplomas and certificates). The main campus is in the **city**; it also has smaller campuses in **Bundoora** and **Brunswick**. It is ranked highly in the world, with the 2014 QS ranking RMIT in the world's top 100 universities in electrical engineering, mechanical engineering, computer science and information systems, and accounting and finance. It is also ranked in the top 150 for civil and structural engineering and in communication and media.

• **WHAT IS SURVEYING?** Surveying is taught at RMIT. It is the **measurement and mapping of our surrounding environment** using specialized technology and equipment. The work of surveyors is all around us, and is required by law and underpins property ownership. It sets the **framework for all architecture, engineering and navigation**. It is **used to create maps for GPS and Google maps, and is integral to sustainable development**. Demand for graduates is at an **all-time high**, with 95% of graduates getting a job within 4 months of graduation, with an average starting salary of \$52,000. **Who is suited to a career in surveying?** You would have an interest in **maths, geography, IT and science**, and a liking for **working outdoors**, and with **technology**. You need to be a **critical thinker, problem solver and orientated to detail**. It has previously been a male dominated profession but is now attracting an increasing number of females.

RMIT has a one-year **Diploma of Surveying** (no prerequisite subjects) and a four year **Bachelor of Applied Science (Surveying) (Honours)** with these



prerequisites: Units 3 and 4: a study score of at least 30 in English (EAL) or at least 25 in English other than EAL; and a study score of at least 20 in one of Maths: Mathematical Methods (CAS) or Maths: Specialist Mathematics. More information is available at: [www.alifewithoutlimits.com.au](http://www.alifewithoutlimits.com.au). (NOTE: EAL is English as an Additional Language).

- **ENGINEERING AT RMIT** – Engineering at RMIT is for those students who are serious about **finding an engineering speciality** and getting stuck into it right from first year (a large range of degrees are on offer).

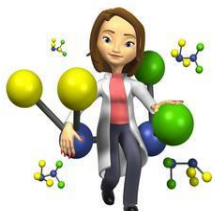


However, it provides flexibility for those who change their mind about their specialization after they start their degree. **Double degrees are available with management, computer science, environment, design and more.** All degrees required 12 weeks **industry**

**placement** before graduation. **Project-based learning** is a feature at RMIT, with students working in teams and in the lab from first year. **What type of student suits engineering?** You need a passion for **science, maths and design**, and you need to be a **problem solver**. Median starting salaries for engineering bachelor degree graduates in first full-time employment and aged less than 25 in 2014 was **\$61,800**. RMIT has various two-year **associate degrees** in engineering. Students who complete these with grade point average of 2.0 or higher are eligible for **guaranteed entry** into and engineering program relevant to their major.

- **SCIENCE AT RMIT** – What makes a **science graduate competitive in the workplace?** Staff at RMIT have considered this and come up with the following:

- ✓ Good **problem solving** skills
- ✓ Good **networking, communications and team work** skills
- ✓ **Breadth and depth** in qualifications – a double degree should be considered
- ✓ An **honours degree** can be an advantage
- ✓ A strong **hands-on component** with practical skills and industry experience in the degree
- ✓ **International** experience (eg student exchange)
- ✓ **Entrepreneurship and business** skills
- ✓ Willingness to **work overseas** for a time graduation
- ✓ Involvement in **extra-curricular** activities.



A number of pathways exist to move from a **diploma to a degree**. (eg the Diploma of Land and Conservation Management can lead to the Bachelor of Environmental Management). RMIT offers a **Dean's Scholars Program**, a four-year course incorporating an honours year for capable and highly motivated students who want research training through hands-on participation in research projects.

#### 4. INDIGENOUS STUDENT EXPERIENCE MONASH DAY

- This is an opportunity for Year 9 - 12 students to go to Monash and get hands on experience of what it has to offer. There will be interactive sessions in faculty areas of interest to each participant, a chance to meet staff and current indigenous students, and to learn about support available. The day is hosted by Yuendj, Indigenous Engagement Unit. **When:** 10am-1.30pm, Fri 1 May (lunch included); **Where:** Robert Blackwood Hall, Clayton; **Book (by 23 April):** Kristel Keleher, [kristel.keleher@monash.edu](mailto:kristel.keleher@monash.edu), ph 9905 8699; [www.monash.edu.au/study/life/indigenous](http://www.monash.edu.au/study/life/indigenous).

#### 5. VCE AND CAREERS EXPO

- The **Age VCE and Careers Expo** is being held once again this year. There will be more than 170 exhibitors with VCE resources, tertiary course and career information. **When:** 9am-3pm, Thurs 7 and Fri 8 May and 10am – 4pm on Sat 9 and Sun 10 May; **Where:** Caulfield Racecourse; **Admission:** \$10 or \$25 for families. This is a great opportunity to gain information at one location. **Info:** [www.vceandcareers.com.au](http://www.vceandcareers.com.au).

**Of course, please be aware that all our Year 12 students are bused out in May to the WRICA Careers Expo in Werribee.**

#### 6. VICTORIA UNIVERSITY TEAMS UP WITH REAL MADRID

– VU sports students will gain behind-the-scenes access to **Real Madrid Football Club** through a new partnership signed this month. The partnership will bring **Real Madrid Graduate School Universidad Europea** expertise to classes in Australia. This school has **some of the world's most highly-regarded sports educators**, in football especially, and this partnership will see these very people deliver lectures at VU campuses.

#### 7. IGNITED SCHOLARSHIPS

- Ignited scholarships at **Deakin University** are designed to attract more **female students into non-traditional areas of study and work**. They are awarded to successful applicants entering an under-graduate **information technology or engineering course**. Each is valued at **\$5,000pa over normal course duration** and recipients are also assigned an **academic mentor**. **Info:** [www.deakin.edu.au/study-at-deakin/scholarships-and-awards/ignited](http://www.deakin.edu.au/study-at-deakin/scholarships-and-awards/ignited). **NOTE:** many tertiary scholarships are on offer; many are for academic performance, but there are many other categories. If you want check them out, go to [www.vtac.edu.au](http://www.vtac.edu.au) and find **Scholarships** at the top of the screen.



**Anna Bovdis**  
**Pathways and Transitions Leader**  
**Williamstown High School**

Compiled by: Martin Walker and Anna Bovdis